

Flow Tester

HS 603_EL

HIGH PRECISION | EASY TO USE | VERSATILE



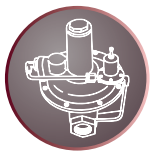
Our Indigenously developed Flow Testers are based on the principle of Mass Flow Measurement.

Our standard Mass Flow instruments with specially designed in accordance to meet specific quality requirement of the applications.

Mass Flow Testers are used to measure flow rate especially for exhaust systems. This Flow Testers are designed for quick test by measuring the flow rate of air through the product being tested at well defined pressure.

Our Next generation electronic Flow Tester is excellent achievement in traditional testing and best solution for any automated systems. Each equipment is equipped with Colour Touch Screen allowed for Better Visibility, Data Storage through USB Stick and user friendliness.

Applications: • Aerospace • Automotive • Gas Regulator



Salient Features :

Pressure Range : up to 2 bar

Resolution : 0.001 LPM

Flow Range : 0-5, 0-20, 0-50 LPM

RS 485

4.3" Touch Panel

Password Protected

Selectable Various Pressure Unit

Selectable Flow Unit

Manual or Electronic Pressure Regulation

Graphical Presentation

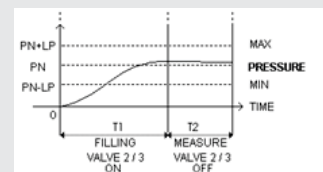
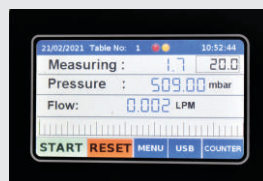
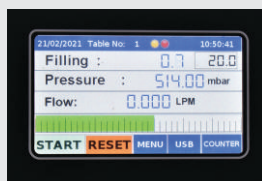
10 Selectable Tables

Specifications :

Pre Requisite	: Air Quality ISO 8753-1, oil free, dew point - 40 degree
Power Supply	: 230 VAC +/- 10 % . 50 Hz
Pressure Range	: 0.1 to 2 bar
Flow Range	: 0 to 5 LPM, 0 to 20 LPM, 0 to 50 LPM
Resolution	: 0.001 LPM
Pressure Accuracy	: 0.5 %
Pressure Regulator	: High Precision Manual, Electronic
Display	: 4.3 " Touch Screen, Password Protected
Indicators	: Pass, Fail Lamps on display
Clock	: Date, Time on front
Programs	: 10 Test Tables programmable
Pressure Unit	: Selectable various units :- bar, mbar, kpa, PSI, etc.
Flow Unit	: Selectable various units :- LPM / LPH
PLC Connections	: Inputs :- Start, Reset, Table selection Outputs :- Pass, Fail
Data Interfaces	: RS 485
Cabinet	: Aluminium Power Coated

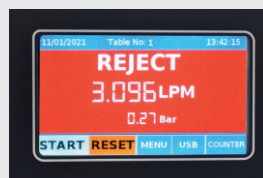
Flow Testing Phases : FILLING + MEASURING = PASS OR FAIL

Principle of Flow Testing



Results Indicating display

Data Acquisition Interfacing



Rear View

- Dimensions : 151 (H) x 252 (W) x 300 (L) mm
- Weight : Approx 7-8 kg
- Tube Connections : Dia 6 x 8



Note : We reserve the rights to change specifications accordingly to model without any information.